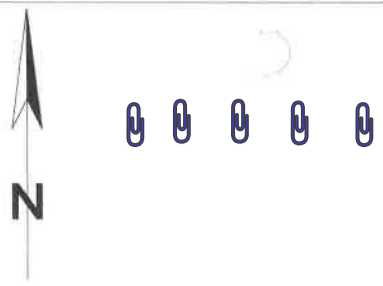
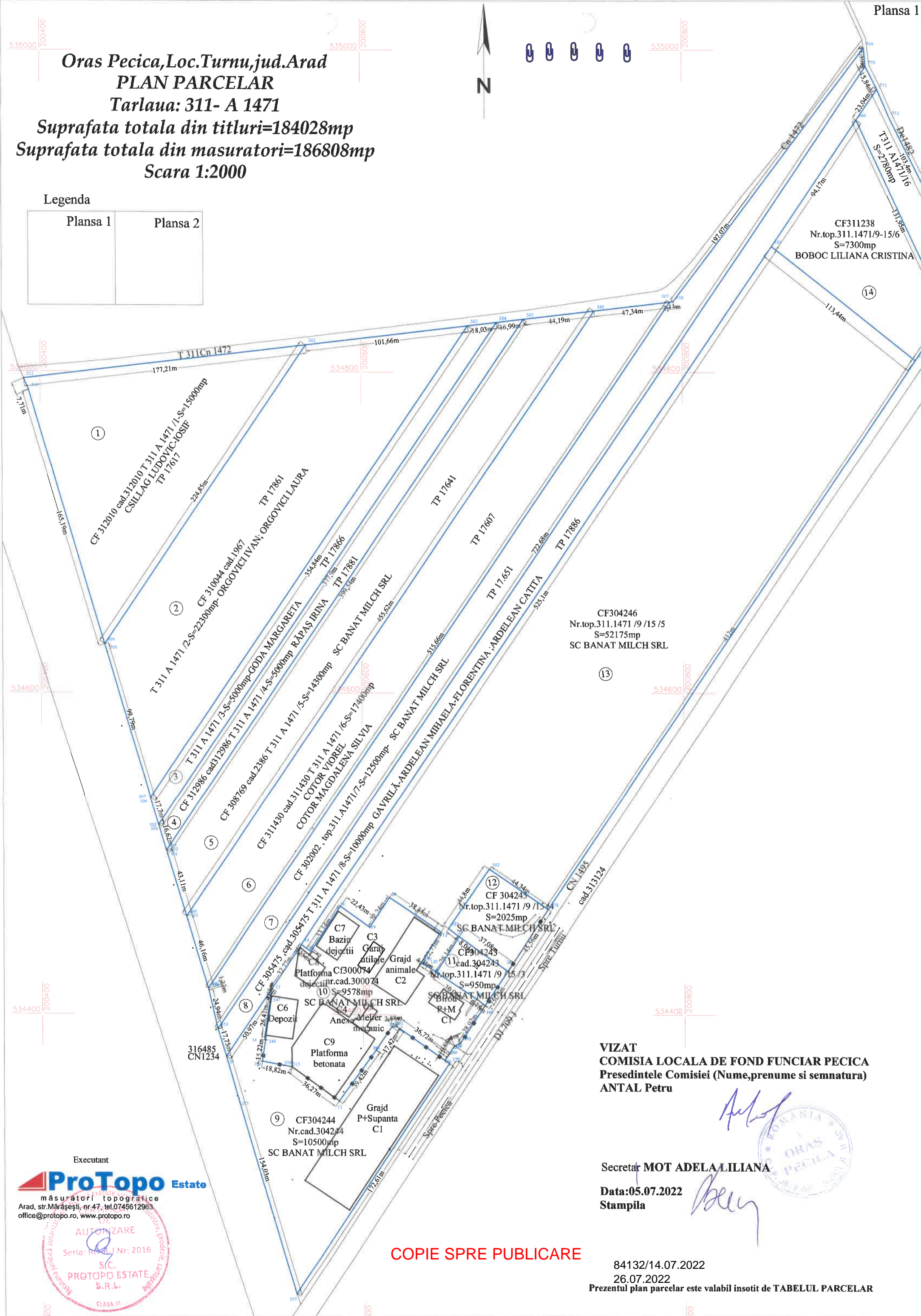


**Oras Pecica, Loc. Turnu, jud. Arad**  
**PLAN PARCELAR**  
**Tarlaua: 311- A 1471**  
**Suprafata totala din titluri=184028mp**  
**Suprafata totala din masuratori=186808mp**  
**Scara 1:2000**



Legenda

Plansa 1	Plansa 2
----------	----------



**VIZAT**  
**COMISIA LOCALA DE FOND FUNCJAR PECICA**  
**Presedintele Comisiei (Nume, prenume si semnatura)**  
**ANTAL Petru**

*Antal Petru*

Secretar **MOT ADELA LILIANA**  
**Data: 05.07.2022**  
**Stampila**

*Mot Adela Liliana*



**COPIE SPRE PUBLICARE**

84132/14.07.2022  
 26.07.2022  
 Prezentul plan parcelar este valabil insotit de TABELUL PARCELAR

Executant  
**ProTopo Estate**  
 masuratori topografice  
 Arad, str. Marasesti, nr. 47, tel. 0745612963  
 office@protopo.ro, www.protopo.ro

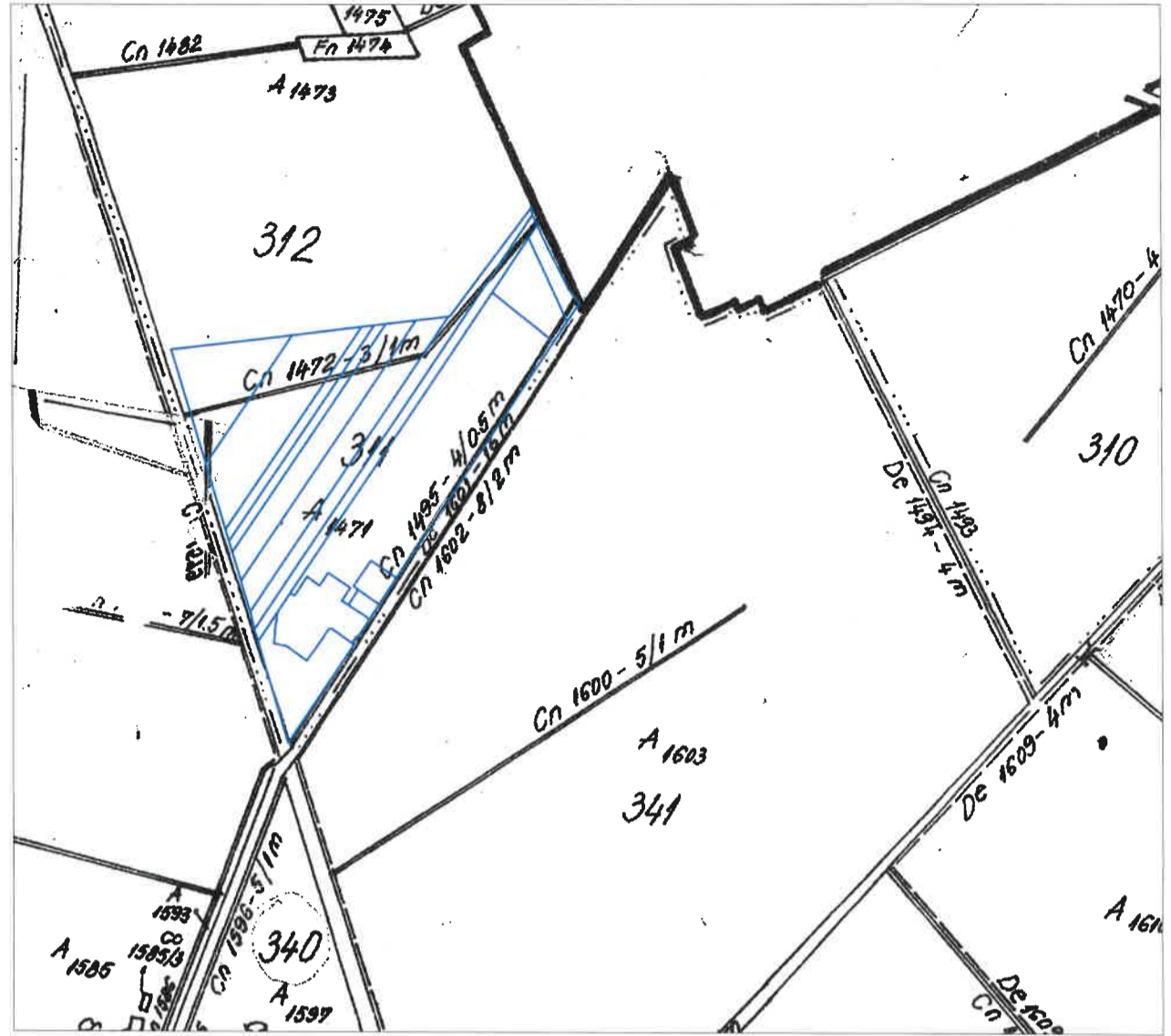


84132/14.07.2022  
26.07.2022

COPIE SPRE PUBLICARE

Legenda

Plansa 1	Plansa 2
----------	----------



Parcela (Suprafata. totala)

Nr. Pct.	Coordonate pct.de contur		Lungimi laturi D(i,i+1)
	X [m]	Y [m]	
0	1	2	3
500	534460.343	200490.216	40.595
501	534499.196	200478.452	0.167
502	534499.356	200478.404	2.350
503	534501.607	200477.729	14.011
504	534515.027	200473.704	2.614
505	534517.535	200472.966	14.783
506	534531.716	200468.791	2.920
507	534534.517	200467.967	94.803
508	534625.462	200441.196	4.986
509	534630.242	200439.777	165.189
510	534788.596	200392.751	7.711
511	534795.661	200389.661	177.207
562	534816.572	200565.630	101.656
563	534828.565	200666.576	18.032
564	534830.692	200684.482	16.995
565	534832.697	200701.358	44.188
566	534837.910	200745.237	47.339
567	534843.495	200792.245	2.127
568	534843.746	200794.357	197.075
569	535001.116	200912.987	11.594
570	534989.570	200914.046	15.845
571	534975.398	200921.132	18.819
572	534958.100	200928.543	84.609
573	534882.355	200966.244	23.110
574	534864.301	200980.671	1.502
575	534863.163	200981.651	32.028
576	534836.599	200963.758	35.000
577	534807.556	200944.226	412.001
578	534464.922	200715.431	45.560
24	534426.974	200690.218	25.752
160	534405.519	200675.976	28.024
169	534382.142	200660.521	3.996
175	534380.470	200656.892	1.140
207	534379.549	200656.221	4.491
206	534375.832	200653.700	5.254
176	534371.444	200650.811	3.501
579	534369.456	200653.693	172.614
557	534225.864	200557.897	124.647
273	534345.461	200522.777	29.384
21	534373.726	200514.745	17.747
558	534390.695	200509.547	24.939
559	534415.004	200503.976	1.225
560	534416.176	200503.620	43.716
561	534458.007	200490.923	2.441

S (Suprafata. totala) = 186808.25mp P = 2123.68m

Nr. crt.	Nr. cadastral atribuit	Observatii parcele, drumuri
1	321024	312010
2	321025	310044
3	321026	T311 A1471/3
4	321027	312986
5	321028	308769
6	321029	311430
7	321030	302002
8	321031	305475
9	321032	304244
10	321033	300074
11	321034	304243
12	321035	304245
13	321036	304246
14	321037	311238
15	321038	T 311 A1471/16